



Lubbock Electric Co.

1108 34th St.
806-744-2336 Lubbock, TX 79411 800-692-4474

LECO's MasterflowPlus Gin Stand Control

The Masterflow Control has been the standard for automatic gin stand controls since 1973. Although upgraded through the years, the internal control has remained the same --- until now!

The basic control scheme is still the same; however, the analog Masterflow printed circuit board has been replaced by a Square D Momentum PLC using a digital loop control algorithm. The analog DC control has been replaced by a digital AC VFD control that increases or decreases the speed of the feeder rollers. To simplify operator control, a graphical touch screen interface guides the ginner through all the features of this new control.

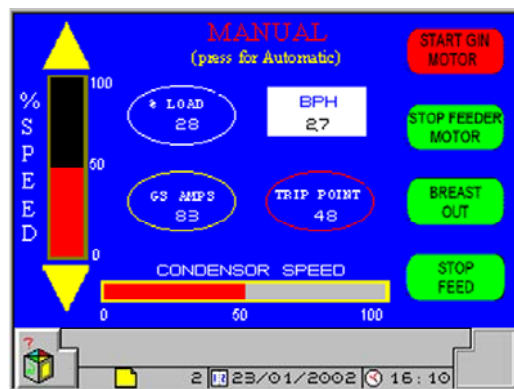
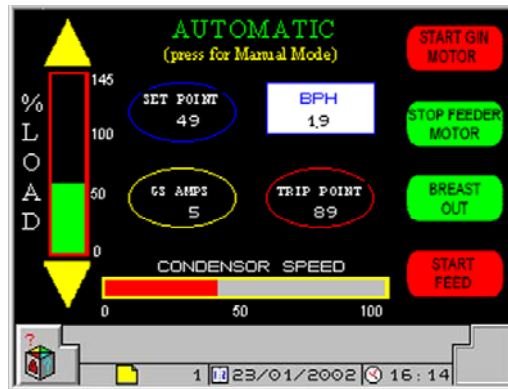
The most important new feature is the ability of this control to communicate to larger PLC control systems. Remote monitoring and control can now be accomplished over communication cables.

The MasterflowPlus is powered by the Square D Momentum PLC with Modbus+ connectivity.

Get all the features of our standard design:

- Automatic Load Sensing
- Automatic Feeder Speed Control
- Automatic Breast Operation
- Overload Protection, Fire Protection
- Proven Reliability and Quality

Operator Touch Screens



--- PLUS ---

- True Digital Loop Control
- VFD Feeder Control
- Touch Screen Operator Interface
- Lint Cleaner / Battery Condensor Connectivity
- Remote Dial-In Capability

Also Available: Lint Cleaner and Battery Condensor VFD Controls



Among the **MasterflowPlus** features are automatic modes of controlling the feed, automatic load monitoring, automatic gin breast operation, automatic overload sensing for motor protection---all controlled by an easy-to-read touch screen display. A digital VFD replaces the older DC controls to vary the speed of the feed rollers. Of course, the unit may also be operated in 'Manual'.

In 'Automatic' the controller maintains a constant load on the main drive motor by automatically increasing or decreasing the speed of the feeder motor. A limit switch senses the presence of cotton in the hopper below the distributor conveyor to bring the gin breast in. The overload protection feature automatically kicks the breast out in the event of motor overload, thereby stopping the flow of incoming seed cotton. In the 'Manual' mode, the feeder speed and gin breast operation are solely dependent on the speed indicated on the operator touch screen.

The **MasterflowPlus** can also regulate the speed of lint cleaners behind the stands by sending a signal to their variable frequency controls. With the **MasterLink** option, all gin stands can be connected together to regulate the variable frequency control on the battery condenser.

CHECK US OUT ON THE WORLD WIDE WEB

www.lubbockelectric.com