

# LECO Trampler & Pusher

- High capacity
- Rugged construction
- PLC control w/Touch Screen
- Rugged pumping units w/Denison pumps & Baldor motors
- Rexroth Logic Blocks
- UHMW Guides for both Trampler and Pusher
- 5" Bore – 120" Stroke

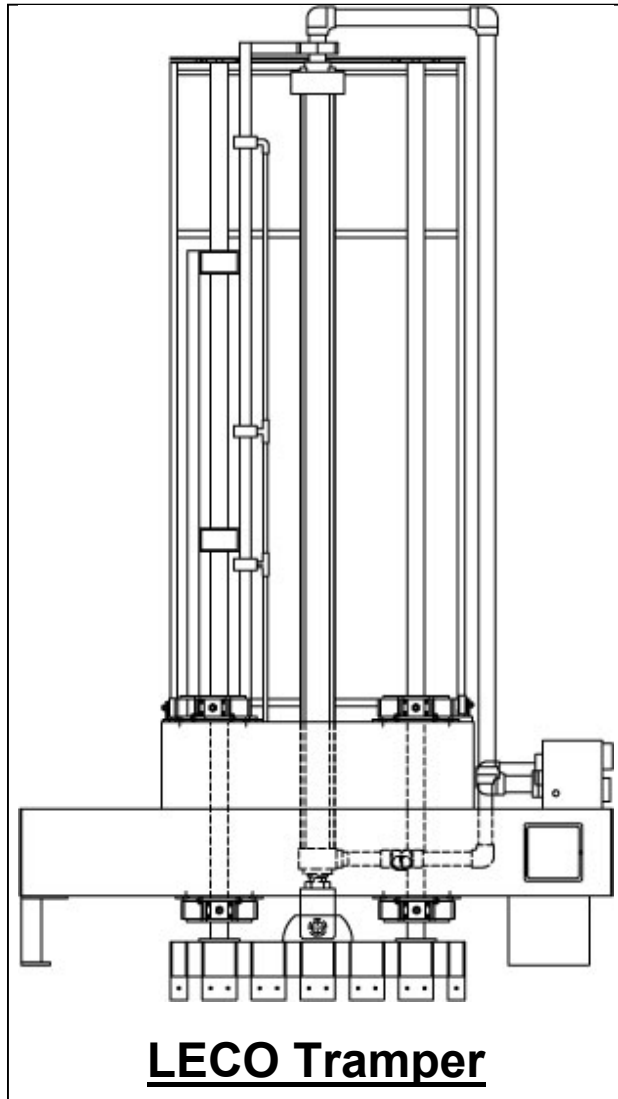
Lubbock Electric Company has been in the business of designing hydraulic power units and state-of-the-art control systems since the '60s.

It seemed only logical to take the next step and try to improve on the current designs of both trampers and pushers.

## OPERATION

The operation is a continuous coordination between the pusher feeding the charge box and the trampler as it makes a compression stroke.

After pushing the Trampler 'Cycle Start' pushbutton, the Trampler and Pusher will begin to operate. The first movement of the trampler will be upward. At a predetermined position as the Trampler moves upward, a proximity switch on the Trampler control rod actuates, signaling the Pusher to extend. The Trampler will continue upward and stop at the top of the stroke until the Pusher has fully extended. Then the Trampler will start down, and as it is moving downward, it actuates a proximity switch signaling the Pusher to retract to receive a new charge of cotton. This sequence will continue until enough cotton has been tramped into the box to cause a signal from the pressure transducer to be sent to the bale weight meter exceeding the high set point. When the high set point is exceeded, the horn will sound indicating the bale is ready. The trampler will complete it's down stroke, reverse, and stop above the top of the box (it can also be programmed to make a short stroke, if desired).



# Lubbock Electric Co.

1108 34th St.

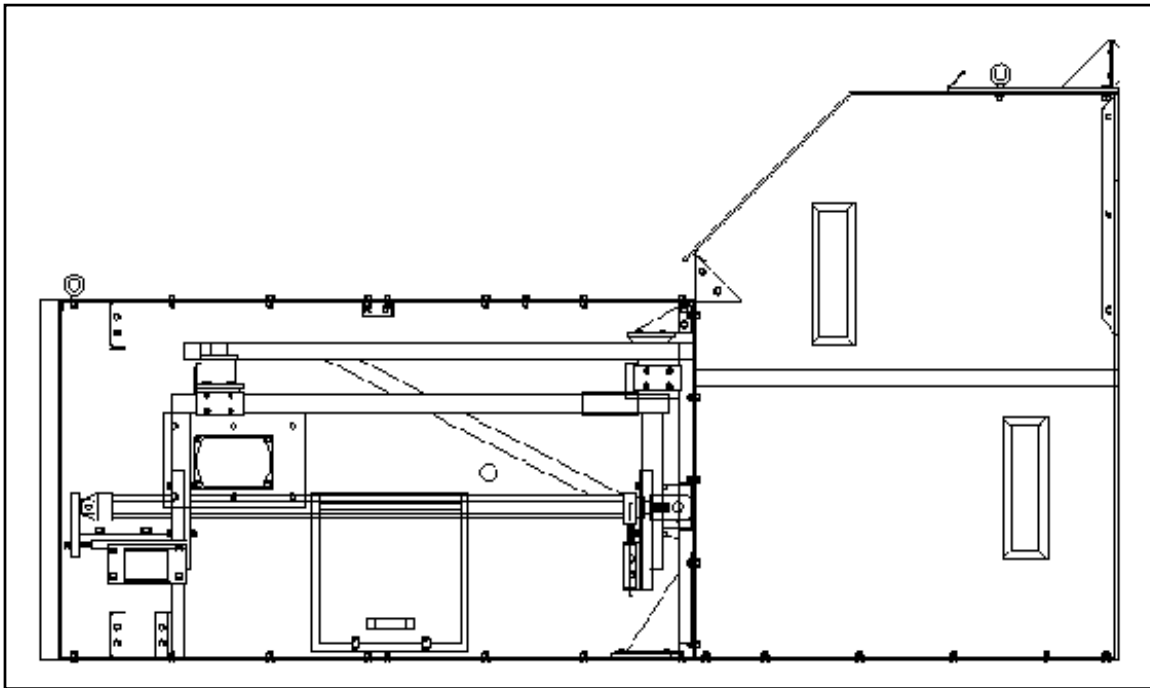
806-744-2336

Lubbock, TX 79411

800-692-4474



## LECO Pusher



- The operator touch screen allows the user to have complete control of the Trampler and Pusher.
- Both Pusher and Trampler have Manual jog switches to extend and retract the Cylinders.
- The Rexroth Manifold facilitates better control of the acceleration and deceleration of the pusher cylinder.
- The rugged UHMW guides incorporate a quieter and smoother operation of the pusher, with no rollers to wear out.
- The Rexroth Pusher cylinder is 2 1/2" bore with a 1 3/4" rod and 54" stroke. The seals are polyurethane and have an operating pressure of 3000 to 5000 psi.

***We furnish complete Trampler and Pusher retrofits to all types of Presses***

**Related Products Available: *Hydraulic Pumping Units, Proximity Switches, Rexroth Accessories, Denison Pumps, Baldor Motors***